

Sepacore Control



SepacoreControl – The simple way to perform chromatography

SepacoreControl software is able to control any Buchi Sepacore chromatography system from simple Flash systems through to advanced preparative Chromatography workstations.



SepacoreControl with Sepacore Flash system: including two pump modules, UV detector and fraction collector

Designed and developed in conjunction with and for research laboratories, the software is intuitive, easy to use and guarantees a safe and reliable operation in any separation procedure.

The SepacoreControl software features the following advantages:

- Easy and intuitive operation
- Both PC and Laptop compatible
- Quick method set up
- Changing gradient profiles on the fly
- Manual control of the solvent pumps
- Easily and adaptable column, rack and solvent management
- Detailed and complete data recording
- Comprehensive yet simple run evaluations
- User specific adjustment of the operation panels
- User interface configurable for touch screen operation



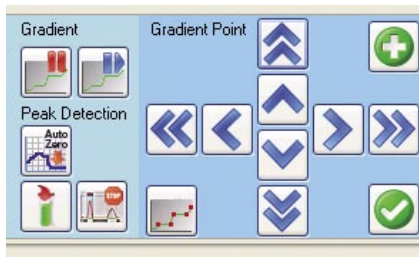
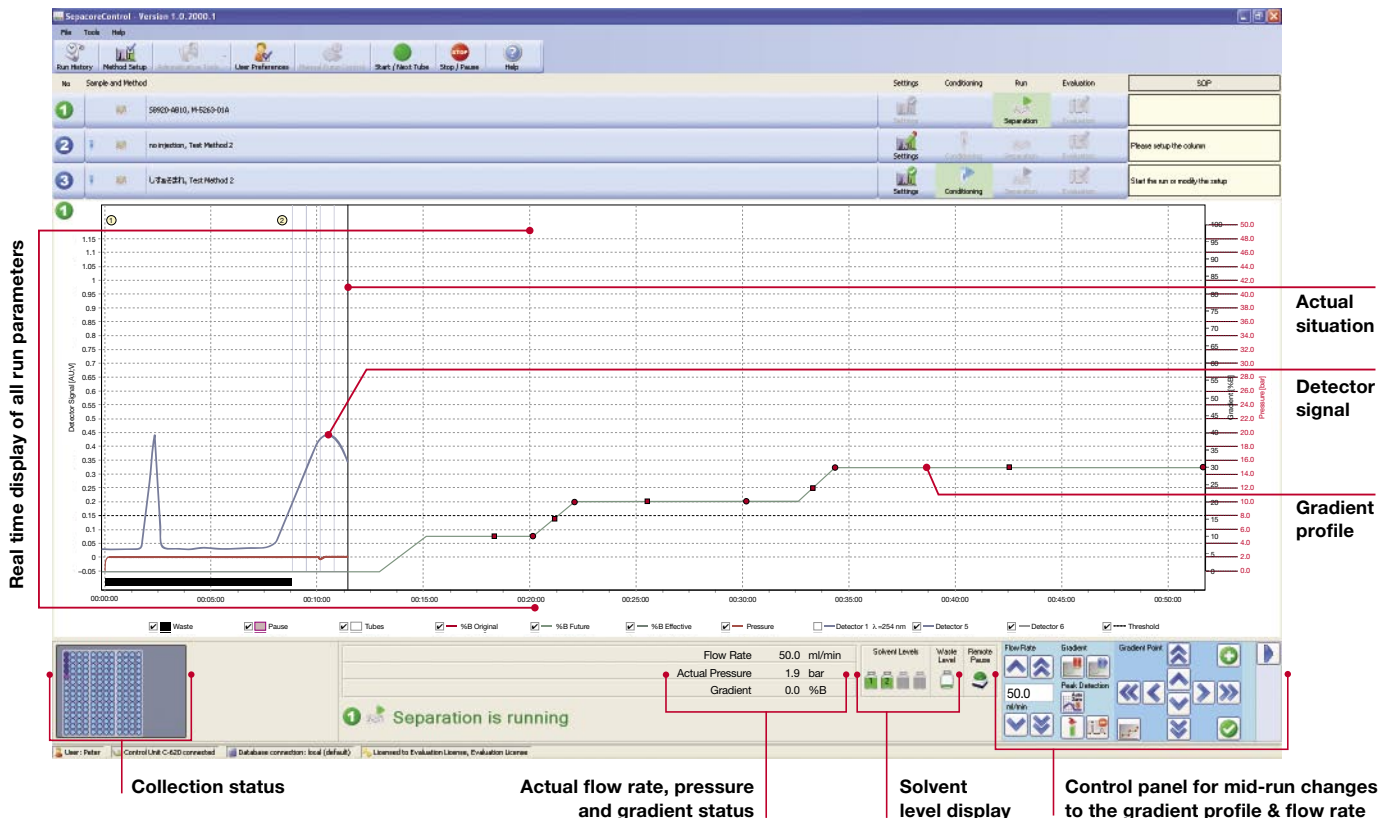
SepacoreControl with Sepacore preparative chromatography workstation: incorporating four pump modules, UV and RI detectors, two fraction collectors and a sequential module.

SepacoreControl supports scale up possibilities for industrial separation:

- Total flow rate up to 1000 ml/min with 4 pump modules
- Total collection volume up to 24 liters with 2 fraction collectors
- Data collection with 8 different detectors e.g. UV, RI...
- A sequential module for automatic sequential workflow of up to five cartridges or columns
- Optional 21CFR Part 11 data management

The cockpit for direct interaction

User-friendly operation, maximum flexibility and reliability are the strengths of SepacoreControl – an intuitive software package that's so easy to use you don't need any training.



Change gradient profile on the fly

All future segments of the solvent gradient and the flow rate can be changed during a run. Unique functions such as maintaining the current solvent mixture for a certain length of time or adding new gradient segments can be achieved with just a few clicks.

Pause before end

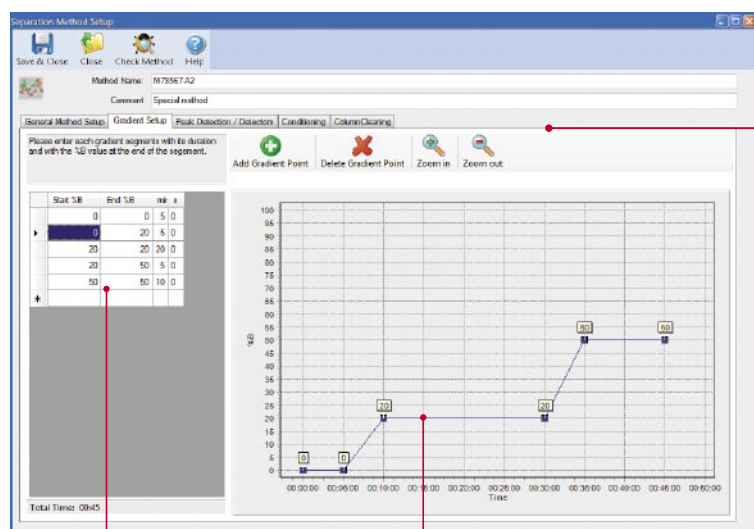
Activating this function pauses the system before the end of the separation step. This allows the end user to check the separation profile and either continue with the separation or change to the next step e.g. cleaning of the column.

Manual pump control

The pumps of the Sepacore system can be controlled manually without programming a method. This helps to condition the system ready for a run e.g. by removing air or fast solvent exchanges.

The pilot for the separation

SepacoreControl – designed for chemical, pharmaceutical or biochemical research laboratories, for kilo laboratories and pilot plants. All application-relevant functions can be precisely amended with just one click.



Tabularly gradient input

Graphical gradient input

Gradient setup

Method management

SepacoreControl allows simple method programming and management.

A typical method would be set up by combining the following steps:

- column conditioning
- separation
- column cleaning
- purge

The purge step allows an automated solvent exchange within all the tubing e.g. when needed for changes from normal phase to reversed phase runs.

Column management

A database of column specifications, suggested flow rates and maximum pressure ratings for the extensive wide range of Buchi cartridges and columns. Other cartridges or columns can easily be added to the database.

Solvent management

A database of common chromatographic solvents and their parameters such as boiling point, UV limitations and abbreviations. Easily expandable with new solvents and solvent mixtures.

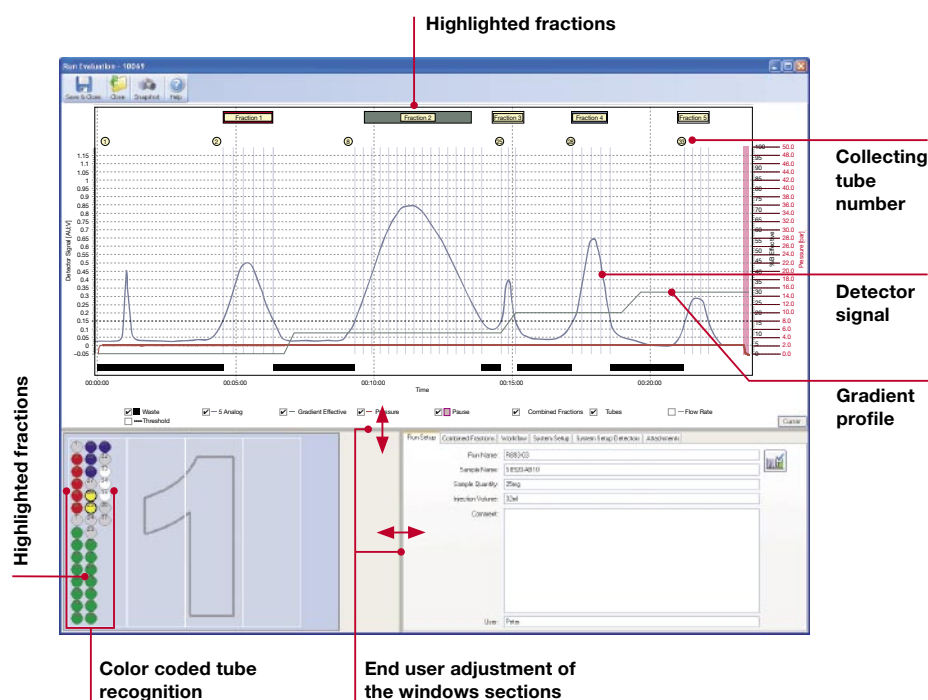
Run evaluation

SepacoreControl offers multiple user definable features such as peak tracking, the ability to highlight fractions of interest and to add comments. User-specific flow charts and records can be exported as PDF files.

Color coded tube recognition and tube numbering for quick location of the desired fraction.

Zoom in and out as well as taking snap shots to highlight important sections for professional reports.

A 21CFR Part 11 licence for data acquisition compliant to FDA regulation is optionally available.



Collecting tube number

Detector signal

Gradient profile

Highlighted fractions

Color coded tube recognition

End user adjustment of the windows sections

Automated sequential separation – not just a dream

Connect up to five pre-loaded cartridges or columns with a sequential module and expand your chromatography system into an efficient automated sequential workstation.



The Sequential Modules C-623/625 are designed to allow either a higher throughput, by running up to 5 columns in a automated sequential way, or for selecting the ideal column for a particular separation by direct access to the installed columns.

- speed up your chromatography
- share the instrument with colleagues
- easy purge function for full flexibility in exchanging solvents
- choose from five different cartridges or column types
- Load up to five samples and run them overnight

High Flexibility

Up to five different cartridges or columns can be connected to the system and automatically selected, meaning there is no need to connect or disconnect columns between runs. Quick and simple changes between normal phase and reversed phase runs become possible by choosing with one click between e.g. small normal phase cartridge, large reversed phase glass column, disposable small reversed phase cartridge etc.

Sequential Workflow

The sequential module allows the preparation of a run whilst another separation is in progress. All parameters can be programmed including a purge step for cleaning the tubing before running the next column under newly defined conditions or different solvents. This makes it possible to share the instrument with colleagues without time and quality loss.



Control Unit C-620

The Control Unit C-620 is more than just an interface between a PC or Laptop and the components of the Sepacore System. The unit integrates safety options such as solvent and waste level sensors and the remote pause push button to your chromatography instrument.



Software for PC, Laptop and Touch screen

The chromatography system can be controlled either via a PC or a Laptop and offers the possibility of a touch screen interface for maximum setup flexibility.



Remote Pause for industrial separation

Immediate pause and go of the chromatography system.

Order information

Name	Description	Order number
SepacoreControl Standard License	Includes SepacoreControl, Control Unit C-620	54600
SepacoreControl 21CFR Part 11 License	License Needed for data acquisition according to the FDA 21CFR Part 11 requirements	54695
Sequential Module C-623	For an automated sequential workup of up to 3 different samples. Includes 2 automated motor valves, 3 injection units and connecting cables	54623
Sequential Module C-625	For an automated sequential workup of up to 5 different samples. Includes 2 automated motor valves, 5 injection units and connecting cables	54625
Remote Pause Push Button	For pausing the chromatography system in a fast and save way without looking for the right key on or touchscreen keyboard	54635
Sepacore On Site Software Support and Training	Product training and support for advanced installation, like database server installation, special licensing server installations, 21CFR Part 11 network set-ups, or advanced data export tasks. The on site support is calculated per day exclusive travel and expenses	32280

System Requirements

Processor:	1 GHz 32-bit (x86) or 64-bit (x64) processor
Memory:	2 GB of system memory (RAM)
Hard drive:	60 GB hard drive with at least 35 GB of available space
Graphic:	Graphic Card with 256MB Graphics Memory
Disc drive:	CD/DVD-ROM drive
	Audio Output
	USB Port

Operating System Requirements:

Windows Vista Ultimate 32 Bit
Windows Vista Business 32 Bit
Windows XP Professional SP2 or higher

Technical Data

Control Unit C-6XX

Dimensions (LxDxH)	465 x 118 x 110 mm
Weight	2.8 kg
Power consumption	30 W
Operating voltage	100–240 VAC ± 10 %
Frequency	50/60 Hz
Temperature	5–40 °C
Humidity	maximum relative humidity
	80 % for temperatures up to
	31 °C decreasing linearly to
	50 % relative humidity at 4 °C
Installation category	II
Degree of protection	IP20

BUCHI Labortechnik AG
Postfach
9230 Flawil 1
Schweiz
T +41 71 394 63 63
F +41 71 394 65 65
buchi@buchi.com
www.buchi.com

BUCHI Labortechnik GmbH
Postfach 10 03 51
45003 Essen
Deutschland
Freecall 0800 414 0 414
T +49 201 747 490
F +49 201 237 082
deutschland@buchi.com
www.buechigmbh.de

BUCHI Labortechnik GmbH
Branch Office Netherlands
Postbus 142
3340 AC Hendrik-Ido-Ambacht
The Netherlands
T +31 78 684 94 29
F +31 78 684 94 30
netherlands@buchi.com
www.buchi.nl

BUCHI Italia s.r.l.
Centro Direzionale, Milano Fiori
Pal. A-4, Strada 4
20090 Assago (MI)
Italia
T +39 02 824 50 11
F +39 02 57 51 28 55
italia@buchi.com
www.buchi.it

BUCHI (Thailand) Ltd.,
77/175, Sin Sathon Tower,
39th FL, Unit F
Krungthongburi Rd.
Klongtong, Klongsan
Bangkok 10600
Thailand
T +66 2 862 08 51
F +66 2 862 08 54
bacc@buchi.com
www.buchi.com

BUCHI SMP
Services Private Ltd.
201, Magnum Opus
Shantinagar Industrial Area
Vakola, Santacruz (East)
Mumbai 400 055,
India
T +91 22 66 98 94 50 / 51
F +91 22 66 98 94 52
smplisp@vsnl.com
www.buchi.com

BUCHI Corporation
19 Lukens Drive, Suite 400
New Castle
Delaware 19720
USA
T +1 302 652 3000
F +1 302 652 8777
Toll Free: +1 877 692 8244
us-sales@buchi.com
www.mybuchi.com

BUCHI Hong Kong Ltd.
1810 Fortress Tower
250 King's Road
North Point, Hong Kong
China
T +852 2389 2772
F +852 2389 2774
china@buchi.com
www.buchi.com

BUCHI Shanghai Trading LLC
21/F Shanghai Industrial
Investment Building
18 Caoxi Bei Road
200030 Shanghai
China
T +86 21 6468 1888
F +86 21 6428 3890
china@buchi.com
www.buchi.com

BUCHI UK Ltd
5 Whitegate Business Centre
Jardine Way
Chadderton
Oldham OL9 9QL
United Kingdom
T +44 161 633 1000
F +44 161 633 1007
uk@buchi.com
www.buchi.co.uk

BUCHI Sarl
5, rue du Pont des Halles
Z.A. du Delta
94656 Rungis Cedex
France
T +33 1 56 70 62 50
F +33 1 46 86 00 31
france@buchi.com
www.buchi.fr

Nihon BUCHI K.K.
3F IMON Bldg.,
2-7-17 Ikenohata, Taito-ku,
Tokyo 110-0008
Japan
T +81 3 3821 4777
F +81 3 3821 4555
nihon@buchi.com
www.nihon-buchi.jp

We are represented by more than 100 distribution
partners worldwide. Find your local representative at
www.buchi.com

Quality in your hands